



Regional Statisticians in the South East
3 July 2007

Peggy Causer
Office for National Statistics

Role of ONS/GSS

- primary responsibility for production of statistics about society & the economy of UK.
- work closely with colleagues in policy departments to pull together data sources and statistical pictures for a wide range of topics - Labour market, Economy, Population, Health, Education
- used by local & national govt and Bank of England to guide policy and monitor impact.
- make statistics widely accessible to enable the public, communities, academia and others to understand information about the UK

New ways of working

- closer to users
- developing partnerships with RDAs, local organisations, observatories etc.
- network of statisticians and related professionals
- better understanding of regional & local requirements
- dedicated support from the centre

Challenges

- statistics are in greater demand than ever before
- an increasing need and interest in **local information**
- wider range of users and skills
- retain cross-UK picture
- a tightening resource environment
- expanding expectation for service
- evolving technology

Response

- data required faster, different formats
- integration with other software/data sources
- greater interpretation – set context
- need to get ‘smarter’ in how we use and share information
- improved metadata – different ‘layers’
- understand requirements – improve focus

Regional statisticians' functions

- first point of contact
- focus for intelligence & feedback
- quality assure regional GVA
- improve quality of business register & surveys
- improve access to data & metadata
- advice on use of official statistics
- facilitate better sharing of intelligence within the region

Since April

- collect intelligence
- advice
- provide data
- explore ways of linking outputs to improve access and quality of information
- preliminary work on industrial composition
- co-ordinate ONS consultations with users
- look at sub-regional geographies
- learn about our area

TTWA consultation

The screenshot displays the Adobe Acrobat Professional interface with a map of the TTWA (Travel to Work Area) for Reading, West Berkshire, and surrounding regions. The map is annotated with yellow callout boxes and numbers (67, 69, 68) indicating specific locations or areas of interest. The map shows major roads (A4, A30, M4, M3), towns (Reading, Henley-on-Thames, Bracknell, Woking, Farnborough), and administrative boundaries. The software interface includes a menu bar, toolbar, and status bar.

Adobe Acrobat Professional - [SE TTWA PCC comment marks.pdf]

File Edit View Document Comments Tools Advanced Window Help

Search Create PDF Comment & Markup Send for Review Secure Sign Forms

Select 313% Help

WEST BERKSHIRE

Reading 67

Henley-on-Thames

M4 69

Thatcham

Bracknell

Newbury

Woking

Farnborough

Aldershot 68

16.53 x 11.70 in

1 of 1

start

Peggy Causer - Info... Microsoft PowerPoint... Regional Presence Adobe Acrobat Profe...

12:02 Friday 22/06/2007

Emerging issues

- suitability of indicators
- QA of datasets
- improved metadata
- access to training
- industrial composition of SE
 - how is it changing
 - effectiveness of policies
- exploring local data
- sub-regional geographies
- female entrepreneurship
- fact sheets for local areas
- improve awareness of current data
- improve analytical capacity
- improve information for specific industries
- better estimates of skills
- more ethnic disaggregation
- greater depth of information on services
- better monitoring of key industries for SE
- more data for smaller areas

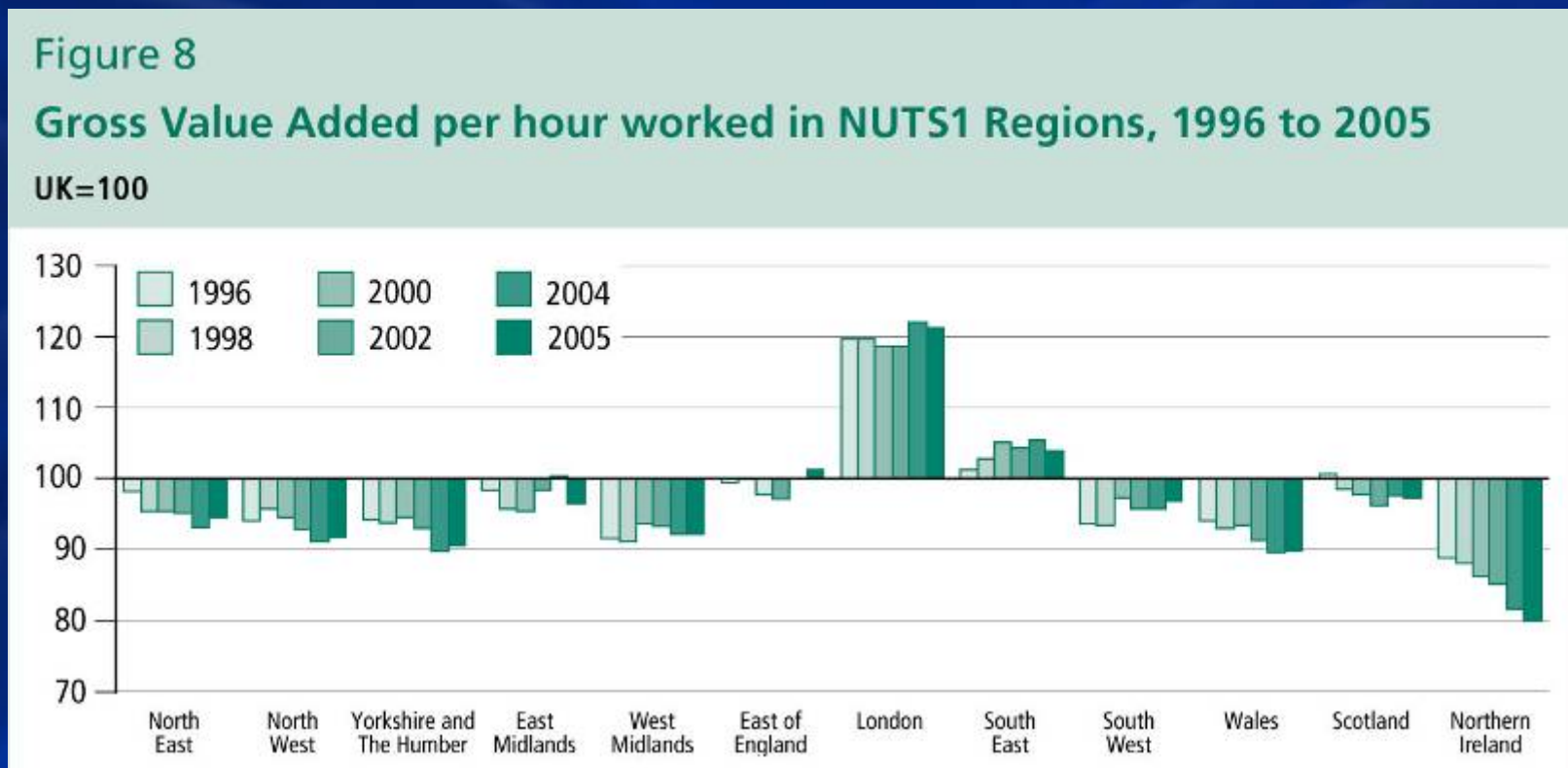
Improve awareness of current data

- wide range of subnational information
- provide guidance on how to find data
- embed links to key datasets
- 'crib' sheets
- contacts
 - helpdesks
 - experts
- forthcoming releases

Improving the Regional knowledge base

Additional analysis on existing sources:

- “Changing Regional Economies”
 - published in May – example: Regions compared....

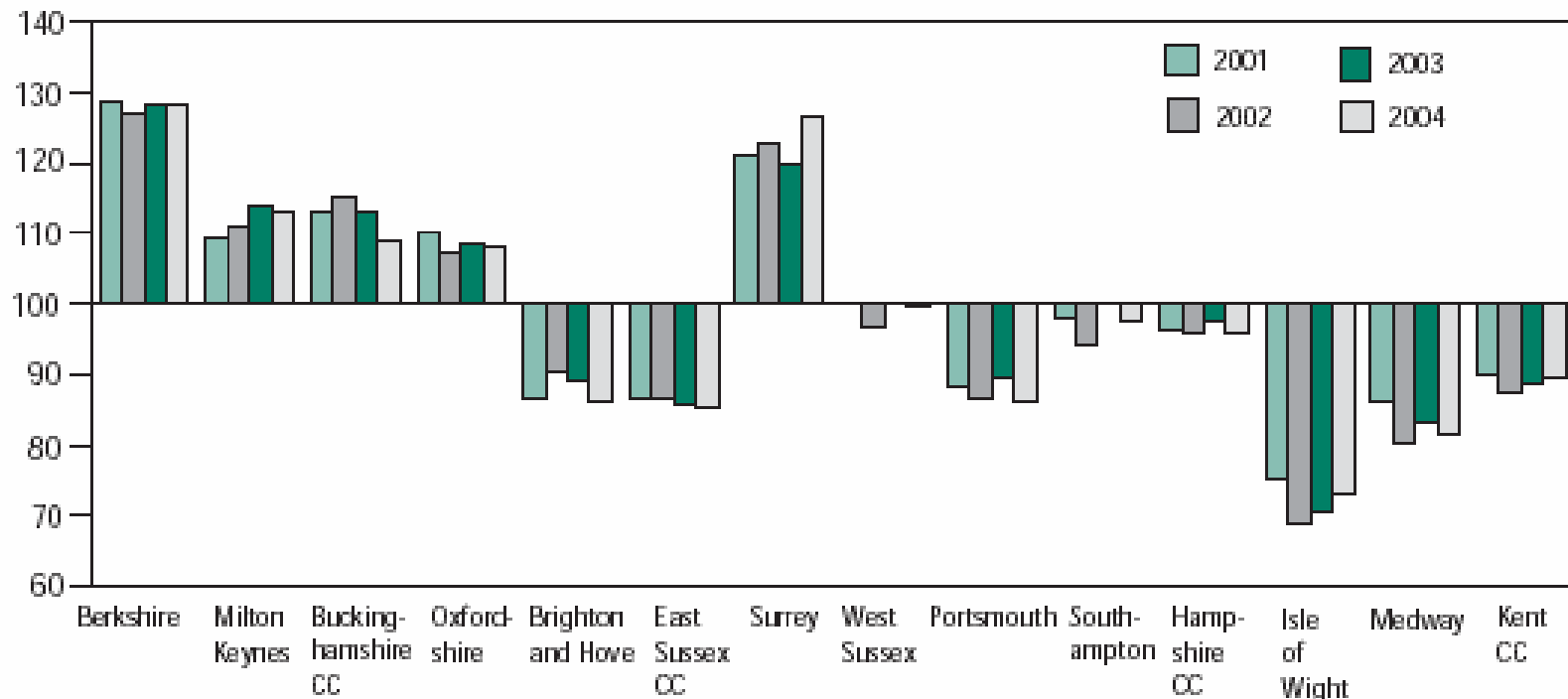


Improving the Regional knowledge base

And differences within the South East:

Labour productivity: Gross Value Added per filled job at NUTS3 level, 2001 to 2004

UK=100



Locally Held / Commissioned Data

A lot of data is collected at a sub-national level by different parts of government (e.g. RDAs, LAs)

- burden on companies
- lack of coherence leading to confused statistical pictures
- all publicly funded, but with little or no co-ordination
- difficult to enforce standards
- issues of confidentiality / data ownership
- issue regarding access to these data

Regional Statisticians could have central co-ordination role

Regional data from National Statistics

- Regional Snapshot
www.statistics.gov.uk/regionalsnapshot
- Neighbourhood Statistics (NeSS)
<http://neighbourhood.statistics.gov.uk/dissemination/LeadHome>
- Labour market regional releases
http://www.statistics.gov.uk/onlineproducts/lms_regional.asp
- On-line products
<http://www.statistics.gov.uk/onlineproducts/default.asp#economy>

Regional Snapshot

Regional snapshot - Microsoft Internet Explorer provided by Office for National Statistics

File Edit View Favorites Tools Help

Back Forward Stop Refresh Home Search Favorites RSS Print Mail News Groups

Address <http://www.statistics.gov.uk/regionalsnapshot/>

national STATISTICS [UK Snapshot](#) [Neighbourhood](#) [Economy](#) [Census](#) [About ONS](#) [Jobs](#) 26 June 2007

home |

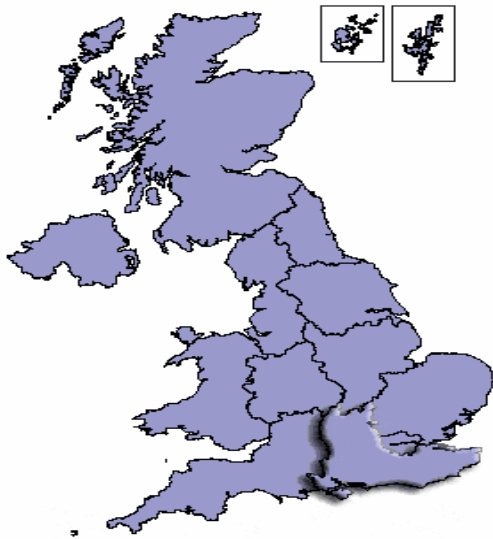
Browse by theme

Select Theme

Regional snapshot

[Text only version](#)

Regional Snapshot provides interesting facts and figures about Wales, Scotland, Northern Ireland and each of the English regions. Click on an area of the map to discover more...



This page last revised: Tuesday 23 May 2006

[Contact us](#) | [Terms and Conditions](#) | [Privacy Statement](#)
[Crown Copyright applies unless otherwise stated](#)

Directgov

Regional Snapshot

National Statistics Online - Microsoft Internet Explorer provided by Office for National Statistics

File Edit View Favorites Tools Help

Back Forward Stop Home Search Favorites Refresh Mail Print Word

Address http://www.statistics.gov.uk/cci/nugget.asp?id=1133


national **STATISTICS** UK Snapshot Neighbourhood Economy Census About ONS Jobs 27 June 2007

home | Search Advanced

Browse by theme Select Theme GO

REGIONAL PROFILE printer-friendly

South East Spent the most on health



In 2005, the South East had a population of 8.2 million. This was 54,000 more compared with mid-2004 and an increase of 12.7 per cent since 1981. The greatest percentage change was an increase of 73.5 per cent in Milton Keynes. This was the largest change in the UK.

Population density was highest in Portsmouth with 4,711 people per square kilometre in 2005. Outside London, the South East had the two most densely populated authorities, Portsmouth and Southampton. The local authority districts of Chichester and West Oxfordshire had the lowest population densities in the region with 139 and 137 people per square kilometre respectively.

The infant mortality rate in the South East was 3.9 in 2005, which was lower than the UK rate of 5.1.

The proportion of people of working age qualified to GCE A level/ equivalent or higher in the South East was around 54 per cent in 2006, compared with a UK average of 51 per cent. More than one-fifth (20.8 per cent) were educated to degree level or higher compared with the UK average of 18.6 per cent. The region also had the joint lowest percentage of working age population with no qualifications, 9.5 per cent compared with a UK average of 13.6 per cent.

In the second quarter of 2006 the employment rate (for people of working age) in the South East was 79 per cent, the highest in the UK.

In April 2006, average (median) gross weekly earnings for full-time employees on adult rates in the South East were £546.80 for males and £410.50 for females, 12 and 6 per cent respectively above the UK levels.

Between 2002/03 and 2004/05, households in the region had the highest expenditure on health, spending £7.50 per week per household; £2.30 above the UK average.

Related Links

- Regional Snapshot Home
- Population Density Map
- Key Statistics: South East
- Publication: Region in Figures
- Publication: Regional Trends
- Urban Audit
- Guide to Geography
- Regional Accounts
- Subnational data
- Article: Changing Regional Economies: South East

External Links

- Nomis
- Regional Observatories
- Regional Development Agencies
- National Assembly for Wales
- Scottish Executive
- Northern Ireland
- Eurostat

Suggested Links

None.

Done

start EN

Notes Corporate Dire... Microsoft PowerPoint ... National Statistics Onl... Document1 - Microsof...

Regional Snapshot

National Statistics Online - Product - Regional Snapshot: Subnational data - Microsoft Internet Explorer provided by Office for

File Edit View Favorites Tools Help

Back Forward Stop Refresh Home Search Favorites

Address <http://www.statistics.gov.uk/StatBase/Product.asp?vlnk=14161>


national STATISTICS [UK Snapshot](#) [Neighbourhood](#) [Economy](#) [Census](#) [About ONS](#) [Jobs](#) 27 June 2007

home | **Search** **Advanced**

Browse by theme

Select Theme

Download Plugin

 Get Acrobat Reader

 Office Microsoft Excel viewer

 Navidata

Regional Snapshot: Subnational data **Product**

Regional Snapshot is a comprehensive source of official statistics about the regions and sub-regions of England, Wales, Scotland and Northern Ireland.

It provides information on a wide range of topics including population, economy, labour market, education and training, housing, transport, crime and the environment.

Regional Snapshot also facilitates access to regional and sub-regional data held elsewhere.

► [View more information about this product.](#) **NS✓**

Office for National Statistics (ONS), Ad hoc, On-line edition, Contact: +44 (0)1329 813765

Download/View entire documents for free here (Left click to View or right click to Download)

- **Local authority key statistics: population & vital statistics** (249Kb - Xls)
- **Local authority key statistics: housing, households & labour market** (264Kb - Xls)
- **Regional Snapshot: Population & migration** (Web link)
- **Regional Snapshot: Crime & justice** (Web link)
- **Regional Snapshot: Education & training** (Web link)
- **Regional Snapshot: Labour** (Web link)
- **Regional Snapshot: Housing** (Web link)
- **Regional Snapshot: Economy** (Web link)
- **Regional Snapshot: Income & lifestyle** (Web link)
- **Regional Snapshot: Health & Care** (Web link)
- **Regional Snapshot: Transport** (Web link)
- **Regional Snapshot: Environment** (Web link)
- **Regional Statistics Strategic Framework** (817Kb - Zip)
- **Regional Snapshot** (Web link)
- **Regional Trends 39** (Web link)

[Contact us](#) | [Terms & Conditions](#) | [Privacy Statement](#) | [Link to us](#)
Crown Copyright applies unless otherwise stated

Directgov

What next?

- develop appropriate networks
- understand more about the South East
 - it's diversity
 - how success stories can be replicated
- use local knowledge to assess centrally-held data
- commence joint research projects
- assist with quality assuring datasets for monitoring
- develop work programme
- agree priorities with partners

Key focus

- exploit existing sources
- facilitate better access to sources; improved sharing of information
- developing stronger links with Regional bodies
- taking forward the Allsopp agenda, albeit against background of Better Regulation and tight budgets
- better understanding of users' needs

Working with SERON

- explore links to source information
- develop communication networks
 - improve sharing of information
 - avoid duplication
 - better understanding of local economies
- build strong partnerships and promote use of statistics
- potential projects for joint working
- mechanisms for sharing workplans & priorities

Regional Statisticians in the Future

- build strong partnerships and promote use of statistics
- develop centres of expertise
- assist with problems for suppliers of data to help improve response rates
- take part in development of the proposed Kitemark standards for data collected by the regional institutions
- provide a secure environment in the regions for researchers to have access to micro-data labs
- act as a regional base, contact, liaison and support for other ONS staff, such as regional fieldwork managers

Contact details

Neil Park:

neil.park@ons.gov.uk

Tel: 01483 501 339

Mobile: 07788 418840

Peggy Causer:

peggy.causer@ons.gov.uk

Tel: 01483 501 301

Mobile: 07788 178756

www.statistics.gov.uk

www.statistics.gov.uk/regionalsnapshot