

The SEE-IN Data Hub: An Overview

Tim Sydenham, Heather Wells and
Marie Mapstone

Overview

- What is it?
- What does it offer?
- How is it accessed?
- What can it do?
- How do you use it?
- What are the benefits?

What is it?

- The SEE-IN Data Hub is an interactive tool providing access to a wide range of data about the South East
- Covers many topics and geographies
- Provides easy to use analysis tools – charting, mapping, tabulating and downloading
- Registered users can load their own data into the tool, facilitating the sharing of data across the South East

What does it provide?

- 135 datasets
- From nearly 30 different sources
- Covering 6 themes:
 - Economy
 - Labour market & skills
 - Social
 - Environment
 - Infrastructure
 - Health
- Accompanying “metadata” for each dataset

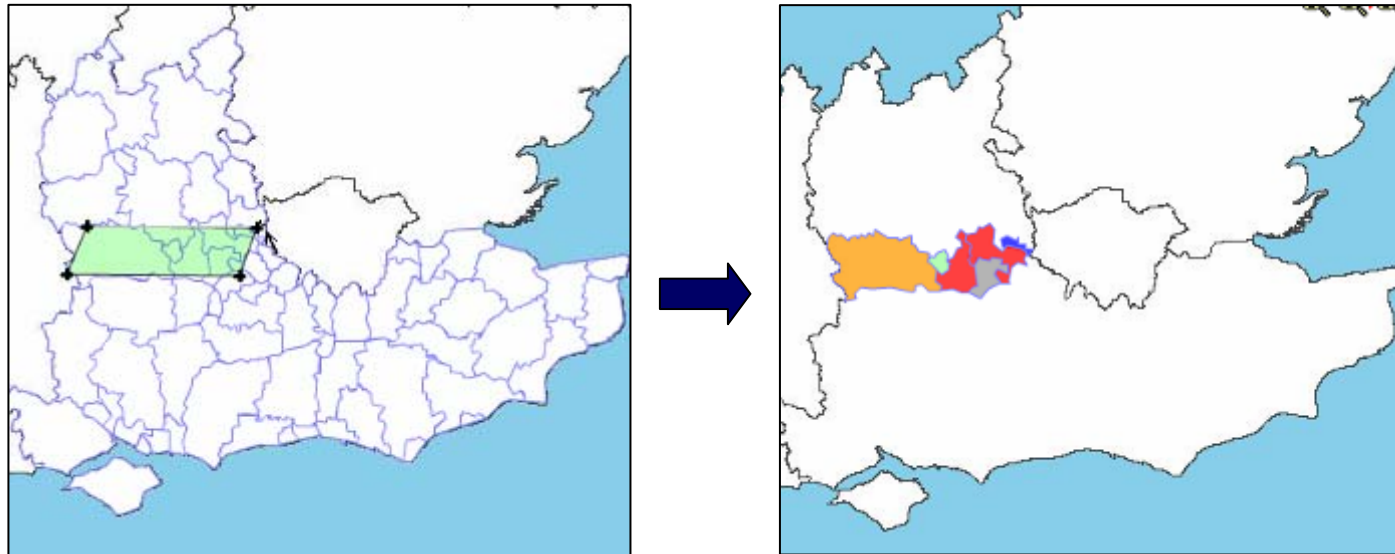
What does it provide?

- The Data Hub incorporates data for 20 different study areas, from a national to SOA level inc.:

National	County/UA
Rural/Urban	Learning & Skills Council
GOR/NUTS1	Primary Care Trust
NUTS2	Local Authority District
NUTS3	Wards (various)
Regional Economic Strategy boundaries	SOA (Middle & Lower)

What does it provide?

- Users can also define their own study area by drawing polygons on a map.



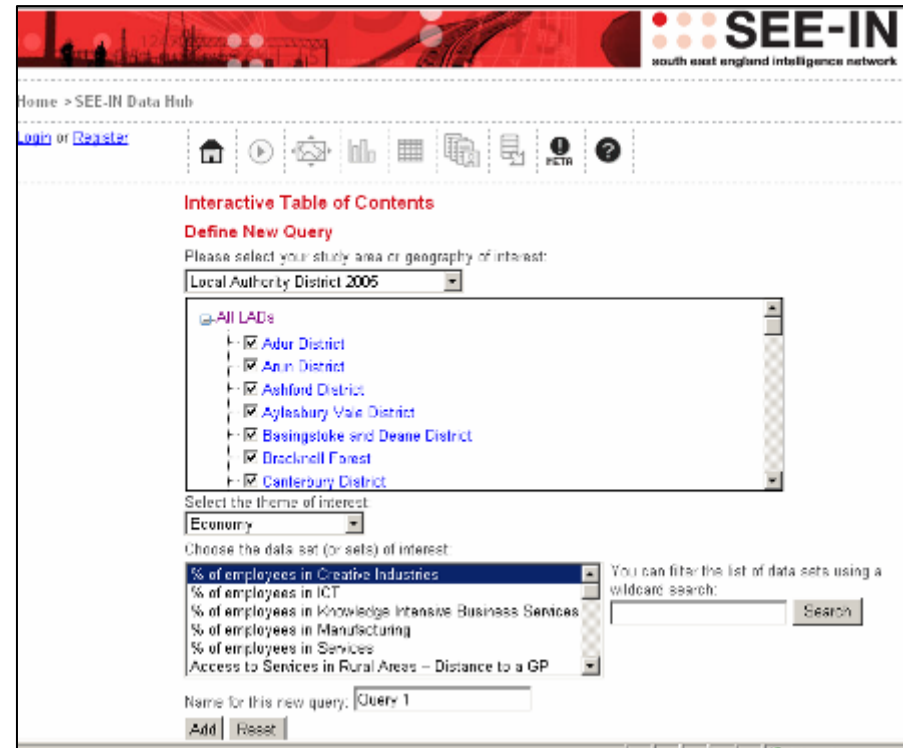
- For nested geographies, this can be applied to lower geographies e.g. wards
- The study area is then available for selection and data is available for the aggregated area and its component parts

How is it accessed?

- URL: <http://sdh.see-in.co.uk>
- Accessible via SEE-IN
- No need to register
- BUT registration brings additional features:
 - Multiple user defined study areas
 - Data upload

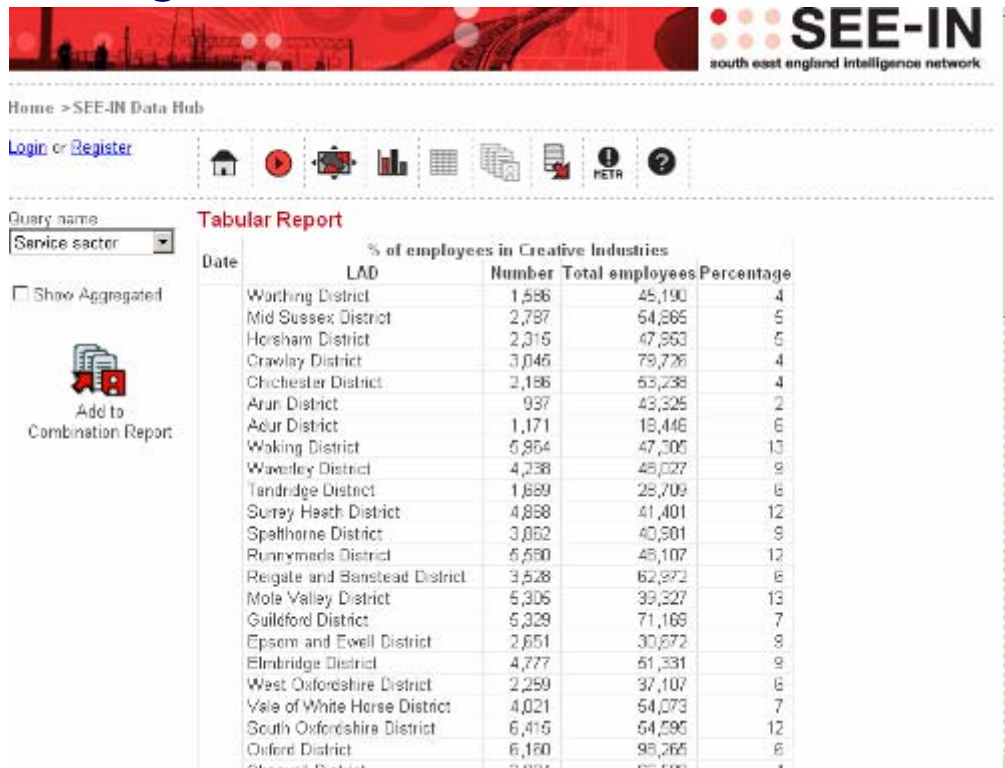
What can it do?

- Data is accessed via the Interactive Table of Contents (i-TOC)
 - Select a study area
 - Select a geography
 - Select a theme
 - Select dataset(s)
 - Save the query



What can it do?

- The query can then be presented as a table, a map or a chart
- Tabulating:



The screenshot shows the SEE-IN Data Hub interface. At the top, there is a navigation bar with 'Home > SEE-IN Data Hub' and a 'Login or Register' link. Below this is a toolbar with various icons for home, search, reports, charts, and help. The main content area is titled 'Tabular Report' and displays a table of data. The table has columns for 'Date', 'LAD', 'Number', 'Total employees', and 'Percentage'. The data is sorted by 'Percentage' in descending order. A sidebar on the left includes a 'Query name' dropdown set to 'Service sector', a 'Show Aggregated' checkbox, and an 'Add to Combination Report' button with a document icon.

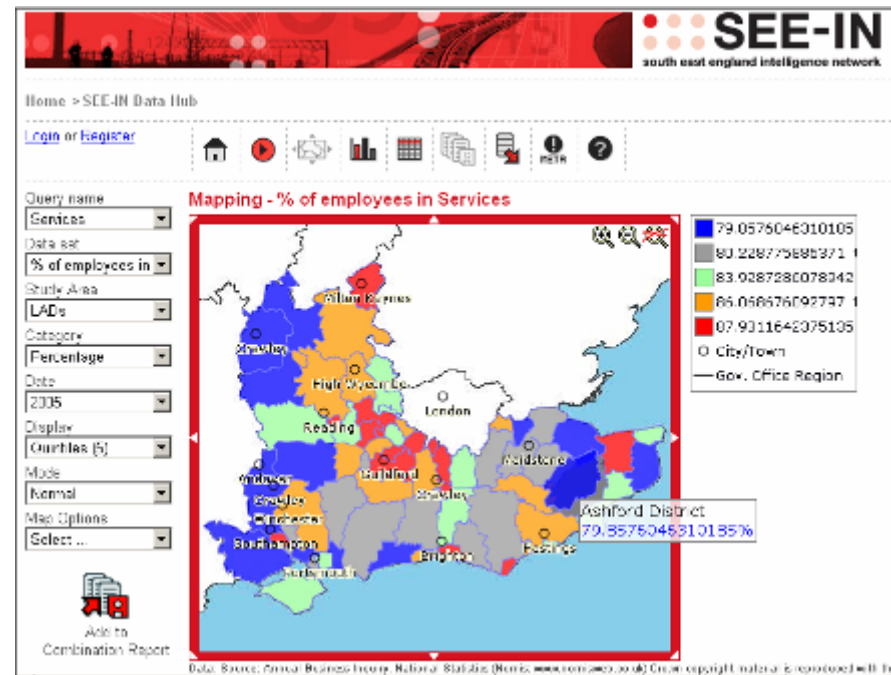
Date	LAD	Number	Total employees	Percentage
	Worthing District	1,586	45,190	4
	Mid Sussex District	2,787	54,865	5
	Horsham District	2,315	47,563	5
	Crawley District	3,045	79,726	4
	Chichester District	2,186	53,238	4
	Arun District	937	43,325	2
	Adur District	1,171	18,446	6
	Woking District	5,954	47,305	13
	Waverley District	4,238	48,027	9
	Tandridge District	1,669	26,709	6
	Surrey Heath District	4,858	41,401	12
	Spelthorne District	3,852	40,501	9
	Runnymede District	5,580	45,107	12
	Reigate and Banstead District	3,528	52,972	6
	Mole Valley District	5,305	39,327	13
	Guildford District	5,329	71,169	7
	Epsom and Ewell District	2,651	30,672	9
	Elmbridge District	4,777	61,331	8
	West Oxfordshire District	2,259	37,107	6
	Yale of White Horse District	4,021	54,073	7
	South Oxfordshire District	6,415	54,595	12
	Oxford District	6,160	98,265	6

What can it do?

- The data can be presented in 3 ways:
 - 1) “Single category” – single category with multiple date points and aggregated geography
 - 2) “Breakdown” – single category, single data point with multiple geographies
 - 3) “Multiple categories” – multiple categories for a single data point and aggregated geography
- Dual Mode also allows the addition of a second series

What can it do?

- Mapping
 - Select query
 - Select dataset
 - Select category
 - Select date



- Map can display quartiles, quintiles or deciles
- Dual mode allows 2 categories to be related to each other and presented on the map e.g. SMEs per 10,000 population

What can it do?

- Tables, charts and maps can be added to a “Combination report”

Report Preview

Contents

[Tabular Report for % of employees in Knowledge Intensive Business Services](#)
[Chart for % of employees in Knowledge Intensive Business Services](#)
[Map for % of employees in Services](#)

Tabular Report for % of employees in Knowledge Intensive Business Services

Query name: #IBS
 Show aggregation: no

Date	LAD	Number	Total employees	Percentage
2005	Guildford District	6,870	71,168	12
	Oxford District	7,161	90,265	7
	City of Southampton	7,526	120,305	6
	City of Portsmouth	6,813	102,891	6
	Reading	10,841	97,970	11
	Medway	4,094	91,621	4
	Aggregated	45,005	582,221	-

Data Source: Annual Business Inquiry, National Statistics (Name: www.nomisweb.co.uk) Crown copyright material is reproduced with the permission of the Controller of HMSO.

Chart for % of employees in Knowledge Intensive Business Services



Added to the
Combination Report.

- The user can adjust the contents and order of the combination report
- The report can be downloaded as a pdf or doc

What can it do?

- Data can be exported as a csv or xls
- Registered users can also upload and manage their own datasets
- While the Data Hub is quick and easy to use, the site features a comprehensive help function and FAQs

What are the benefits

- The SEE-IN Data Hub should:
 - Act as a centralised point of access to data covering a wide array of themes and South East geographies
 - Allow users to analyse, table, chart and map data on screen or download data as a report or raw data file
 - Allow users to share data, contributing to a comprehensive evidence base for the South East